

Dueodde Strand Ferielejligheder



Welcome to Dueodde

Dear Guest

Welcome to beautiful Dueodde and welcome to our holiday apartments.

We hope you have a lovely stay and will enjoy your time here as much as we do when we, as owners, use the apartment ourselves.

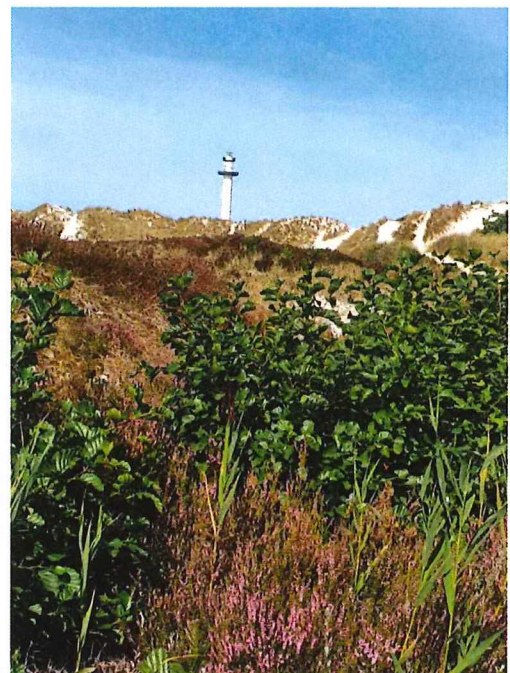
If you are on holiday with family/friends who live in other apartments and therefore want to eat together, please be aware that kitchenware and other items that you may bring to one of the other apartments will be brought back - as it is not possible for the cleaning staff to remember which items belong in this apartment.

If an accident occurs - and something breaks - we ask you to notify the rental agency so that the problem, can be quickly resolved to the delight of you and the next guests.

Smoking is not permitted in the apartment or terraces/balconies. Smoking is permitted in the barbecue area. Pets are allowed to the extent that they are approved for the individual apartment, but no pets may be left alone in the apartment.

We are very happy with our apartment and
Therefore, we ask you to take good care of it.

**We wish you a very good
holiday**





NOVASOL - Information

We hope you have a wonderful holiday on Bornholm and enjoy your stay in the apartment.

If you cannot find the answer to your questions here in the folder, you can contact NOVASOL. Below you will find contact information for NOVASOL.

You will find most of the welcome information digitally via your rental contract at your rental agency.

NOVASOL has an office in Nexø at the address: Sdr. Hammer 2G, 3730 Nexø. You are welcome to visit them if you need personal contact, the office opening hours are:

Monday-Tuesday-Thursday-Friday: 10:00-15:00 + Saturday: 10:00-18:00
Wednesday + Sunday = closed

NOVASOL's office in Gudhjem Søpark is also open on Sundays

Outside the local office opening hours, NOVASOL's central guest service can be contacted at:

+45 97 97 57 57 or +4539146063

----- o O o -----



Dueodde Strand Ferielejligheder



1 LADESTANDER TIL EL BILER 10 STK



2 HJERTESTARTER

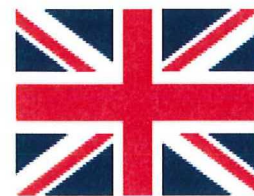


3 BRANDSLANGE I STUEPLAN VED LEJ 305, 103 112, 116



4 HÅNDSPRØJTE PÅ 1 SAL VED LEJ 406, 204, 207, 214,216

Dueodde Strand Ferielejligheder



Kitchenware and tableware etc.

'2-room apartment - 4 people-room'

Type:	Antal:
Large plates	6
Soup plates	6
Cake plates	6
Cups and saucers	4
Mugs	4
Egg cups	4
Drinking glasses	6
Wine glasses	6
Shot glasses	4
Table knives	6
Forks	6
Spoon6	6
Teaspoons	6
Sauce spoon	1
Sauce pot/bowl	1
Bread knife	1
Butcher knife	1
Herb knife	1
Peeling knife	1
Whisker	1
Wheel beater	1
Cutting board	1
Frying pan	1
Pots	2
Pot spoons	2
Pallet	1

Type:	Antal:
Plastic bowls	2
Glass bowls	2
Juice jug	1
Measuring cup	1
Can opener	1
Beer opener	1
Corkscrew	1
Universal scissors	1
Cheese cutter	1
Coaster	2
Garlic press	1
Cheese grater	1
Electric kettle	1
Coffee maker	1
Toaster	1
Instant jug	1
Crockery tray	1
Colander	1
Dishwasher	1
Dish brush	1
Floor scrubber	1
Broom	1
Sweeping tray	1
Water bucket	1
Vacuum cleaner	1

Dueodde Strand Ferielejligheder



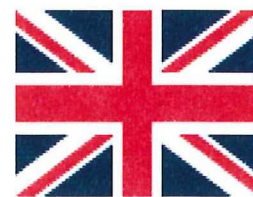
Kitchenware and tableware

'1-room apartment - 2 people-room'

Type:	Antal:
Large plates	4
Soup plates	4
Cake plates	4
Cups and saucers	4
Mugs	4
Egg cups	2
Drinking glasses	4
Wine glasses	4
Shot glasses	2
Table knives	4
Forks	4
Spoon ⁶	4
Teaspoons	4
Sauce spoon	1
Sauce pot/bowl	1
Bread knife	1
Butcher knife	1
Herb knife	1
Peeling knife	1
Whisker	1
Wheel beater	1
Cutting board	1
Frying pan	1
Pots	2
Pot spoons	2
Pallet	1

Type:	Antal:
Plastic bowls	2
Glass bowls	2
Juice jug	1
Measuring cup	1
Can opener	1
Beer opener	1
Corkscrew	1
Universal scissors	1
Cheese cutter	1
Coaster	2
Garlic press	1
Cheese grater	1
Electric kettle	1
Coffee maker	1
Toaster	1
Instant jug	1
Crockery tray	1
Colander	1
Dishwasher	1
Dish brush	1
Floor scrubber	1
Broom	1
Sweeping tray	1
Water bucket	1
Vacuum cleaner	1

Dueodde Strand Ferielejligheder

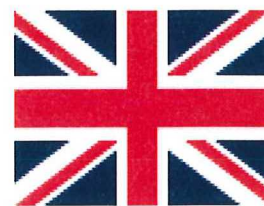


Kitchenware and tableware etc.

'Small-room' - 2 people'

Type:	Antal:
Large plates	2
Soup plates	2
Cake plates	2
Mugs	2
Drinking glasses	2
Wine glasses	2
Table knives	2
Forks	2
Spoons	2
Teaspoons	2

Type:	Antal:
Beer opener	1
Electric kettle	1
Coffee maker	1
Floor scrubber	1
Broom	1
Sweeping tray	1
Water bucket	1
Dishwasher	1
Dish brush	1
Vacuum cleaner	1



Internet og TV

Internet

Free wireless internet access is available in all apartments at Dueodde Strand Holiday Apartments when connecting your own equipment. Signal strength may vary due to atmospheric disturbances and if the network is not functioning optimally, this does not provide grounds for financial compensation.

Network: [DBH](#) Code: [Dueodde19](#)

TV channels

The following TV channels can be viewed:

Danish:

1. DR1
2. TV2
3. DR2
4. Ramasjang (children)
5. TV2-Bornholm (local)
6. TV Bornholm
7. Folketinget
8. -

Swedish:

9. SV1
10. SV2
11. TV4 Sverige

Norwegian:

12. NRK1
13. NRK2

German:

14. ARD
15. ZDF
16. Kika (children)
17. Eurosport
18. Super-RTL
19. RTL2
20. -



Waste sorting

How to sort your waste and deliver it to the containers

There have been stricter requirements in the EU for sorting waste - which we must follow. In the apartment, under the kitchen sink, there is an opportunity to sort your household waste - and between the apartment blocks, you will find the large waste containers for:

'Food', 'Residue', 'Plastic', 'Paper/cardboard', 'Glass/Metal and bottles'

Ordinary garbage bags may be used for food waste - the text in the image below only in Danish.

MADAFFALD

✓ MADAFFALD

For gammel mad
Kaffegrums
Æggeskaller
Mindre knogler
og ben
Blomsterbuketter



HUSK AT BINDE KNUDE PÅ POSEN

RESTAFFALD

✓ RESTAFFALD

Beskidt papir
og pap
Pizzabakker
Hygiejneaffald
Cigaretskodder
Bagepapir



HUSK AT BINDE KNUDE PÅ POSEN

PLAST

✓ PLAST

Plastbakker
Plastflasker
Plastbøtter
Plastposer
Bobleplast

**MAD- & DRIKKE-
KARTONER**

✓ MAD- & DRIKKE-
KARTONER

Mælkekartoner
Yoghurtkartoner
Juicekartoner
Madkartoner



TØMT OG SKRABET

TØMT OG KLEMT FLAD

PAPIR

✓ PAPIR

Aviser
Reklamer
Papirposer

PAP

✓ PAP

Papkasser
Papæsker
Paprer
Æggebakker

**TEKSTIL-
AFFALD**

✓ TEKSTILAFFALD

Slidt tøj og tekstiler



RENT OG TØRT

RENT OG TØRT

TEKSTILER I POSE

GLAS

✓ GLAS

Flasker u. pant
Konservesglas
Drikkeglas
Vitaminglas
Glasskår

METAL

✓ METAL

Konservedåser
Metallåg
Foliebakker
Drikkeåser



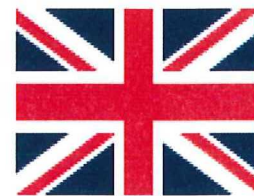
TØMT OG SKRABET

TØMT OG SKRABET



'Batteries and small electronics' - can be dropped off at the 'Eco Station' in the large parking lot

If you are unsure how to sort your waste, please place it in 'Residual'



Information

Practical, useful and important

Electric cars

There are 10 charging stations for electric cars in the large parking lot behind the 'Krølle Bølle' ice cream parlor and the public toilets, approx. 200 meters from the Holiday Apartments - marked with '1' on the overview map.

The rent of the apartment includes 'only' regular electricity consumption. The electricity grid in the buildings is not dimensioned for the charging load required by an electric car. **Therefore, it is not permitted to charge electric cars**, as this will cause the power to be cut off for all the apartments in the apartment block in question.

Non-smoking holiday apartments

All holiday homes at Dueodde Strand Holiday Apartments are non-smoking indoors, and smoking is also not permitted on terraces/balconies. However, you are welcome to smoke in the barbecue area and by the ashtrays provided.

Bed linen

There is both a pillow and a duvet on the beds. For any 2 beds in the living room, duvets and pillows can be placed in the closet or the sofa bed box; but on all 4 beds, the sheet must be placed on top and bed linen on both duvets and pillows. You have either brought bed linen or ordered a 'linen package' from your rental agency.

Grill

You are welcome to use the barbecue area. Grilling is not allowed at the apartments, as it can cause smoke nuisance for the other guests. Remember to clean the communal grill after use, so that it is nice and clean for the next guests.

Laundry

There is a washing machine and dryer on the ground floor - 'Coin laundry' is written on the door. Remember to set the washing machine to '*safe time*'.

Dog

In some holiday apartments, you are allowed to bring a dog. The dog must not be left alone in the holiday apartment, and we kindly ask you not to leave the dog in the beds or on the sofa. When you walk the dog, we ask that you always keep the dog on a leash and pick up any waste.

Dueodde Strand Ferielejligheder

Shared facilities

During your stay you can freely use the barbecue area, sun loungers, bouncy castle, playground and ball and hockey field (formerly tennis court). The sun loungers are not attached to a specific apartment but are shared by everyone and for free use in the garden - they may not be taken to the beach.

Shopping

The site at Dueodde offers a restaurant/cafe and ice cream parlor. At the 2 nearby campsites *Møllers Camping and Dueodde Vandrehjem & Camping* (approx. 300 meters from the holiday apartments) you will find small mini markets. Larger shopping options are in Snogebæk (4 km), where there is Dagli' Brugsen, and in Nexø (8 km), where there are both Kvickly, Netto, Coop 365 and Lidl as well as a bakery etc. The nearest smokehouses are both in Snogebæk and the northern part of Nexø.

Opportunities in the area around Dueodde

- The widest part of the beach is easily accessible via a 'wooden walkway' (handicapped-friendly to the beach edge) through the pine forest and dunes (approx. 500 m), it starts just after the restaurant.
- If you instead continue straight on after Sirenevej and at the bottom of Fyrvej, you will come to Dueodde lighthouse, which has an excellent view if you force the 198 steps.
- The 2 old cannon positions the Germans made in 1940 can be found on either side of Skrokkegårdsvej, turn in from Dueoddevej. The gradually overgrown area they are located in can make it a little 'treasure hunt' to find them.
- At the Cold War Museum on Dueoddevej, where the old listening station is also located, there is also a mini golf course.
- There are also 2 real 18-hole golf courses on South Bornholm.

Bicycle rental

Many experiences can also be had by taking some bicycle trips. You can rent bicycles at Boss Cykler, Kannekegårdsvej 10, 3730 Nexø (approx. 7 km from Dueodde). Can be ordered by phone 56 49 44 74.

IF you use a bicycle during your holiday, please park it under or by the stairs. We kindly ask that you do not bring bicycles into the apartments or place them against the walls - bicycles or anything else may not be placed in the hallway on the 1st floor because there must be free passage to the escape route in the event of a fire (authority requirements).

Fire equipment and emergency exits

For safety reasons, fire equipment is placed in appropriate places in the buildings - cupboards with fire hoses on the ground floor, marked with '3', and on the 1st floor there are hand sprayers, marked with '4' on the overview map. Emergency

Dueodde Strand Ferielejligheder

exits with green 'UD signs' are shown at all staircases on the 1st floor.

Important telephone numbers:

Emergency room/medical emergency:	1813
Bornholm Hospital (Rønne):	38 67 00 00
Doctors in Nexø:	56 49 20 20
Alarmcenteren:	112
Police:	56 90 14 48 + Emergency: 114
Dan Taxi:	48 48 48 48 / 56 95 23 01

AED

The nearest AED is located in the public toilet building – next to the ice rink, over by the large parking lot – marked with '2' on the map.

Hjertestarter

Nærmeste hjertestarter findes på de offentlige toiletters bygning – ved siden af ishuset, over ved den store Parkeringsplads - markeret med '2' på oversigtskortet.

Show consideration

All apartments at Dueodde Strand Ferielejligheder are owned by private individuals who use the holiday apartment themselves when it is not rented out. Many of the owners have their personal belongings in the holiday apartment. Therefore, please show consideration and take care of the furnishings, and we ask you not to move furnishings between apartments.

We hope you enjoy your stay and that you may want to come again - you are also welcome to report on your experience of the apartment/location to NOVASOL.

Departure

The latest departure time on the day of departure is 10:00 am to allow the cleaning staff to prepare the holiday apartment for their next arrival. We ask that you return the key to the key box and turn off the code so that it is locked.

Before you leave the apartment, please make sure to empty the refrigerator (the refrigerator must not be turned off), wash the dishes and empty both the waste bins and the toilet waste bin.

Thank you in advance.

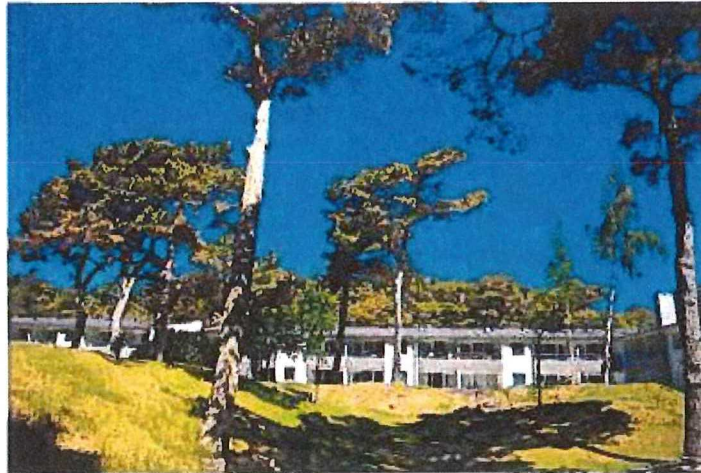
Hope you had a good holiday at Dueodde

'see you again' - next year 😊



The history of the 'holiday center'

Formerly: *Dueodde Badehotel* - now *Dueodde Strand Holiday Apartments*



In the 19th century, the area around Dueodde was characterized by heavy sand blowing, which is why planting was needed to retain the sand - otherwise Dueodde would become a barren sandy desert. But the successive Danish kings did not have money for the project and offered the farmers around Dueodde that they could have the beach areas for free if they planted the areas in return.

The farmers said 'no thanks' - because what would they do with sandy areas where nothing could grow? Therefore, the farmers were forced by law to take over the land and plant it. At first, the farmers were angry, but more than a hundred years later their attitude changed. Dueodde had become a beautiful and sought-after natural area. One of the farmers who was happy in the end was the owner of the farm 'Duegård'. He had been given land register number '121HR'.

In 1932, the owner of Dueogård sold land plot 121HR to Mrs Agnes Skov, who built the first "*Dueodde Badehotel*" on the land. A royal decision from the 19th century is therefore the reason why you can now holiday in this scenic place.

In 1933, Agnes Skov was able to open the doors to the '*Dueodde Badehotel*' for the first time, which was one of the most fashionable hotels of the time. Although the 30s were times of crisis, the hotel became a very popular holiday resort. Agnes Skov had some good years until the outbreak of World War II in 1939/1940. Tourism stopped abruptly, and the

Dueodde Strand Ferielejligheder

war instead offered "new customers". As mentioned in the history of the Dueodde area, the Germans wanted to establish long-range gun positions at Dueodde - therefore the German commanders and engineers had to live well, which is why they took over and stayed at the then *'Dueodde Badehotel'*.

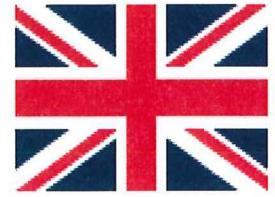
At the end of World War II, Bornholm was occupied by Russian troops, and of course they also thought Dueodde was a beautiful area – so when the Russians strategically established their command center on the southern part of Bornholm, at Dueodde, the 'Dueodde Badehotel' was also used for the Russians' accommodation. But where the German troops had treated the hotel nicely, the Russian troops were much more violent - and when the Russians left, they took almost all the furniture from Dueodde Badehotel with them.

Agnes Skov was therefore left with an empty and destroyed hotel in 1946. With hard work, she got the hotel back on its feet. In the early 1970s, Agnes Skov sold the hotel to Carl Johan Larsen, who expanded the hotel. However, the hotel was run-down, and in 1977 it was taken over by Poul Henmar and Henning Skovgaard – who then demolished Dueodde Badehotel and built the current buildings in 2 stages. First the wing with the apartments starting with the numbers 300 and 400 and shortly after also the angle building to the east, with the numbers in the series 100 and 200.

Dueodde Badehotel was completed in 1979 and then operated as a hotel with a changeable existence with changing ownership.

In 2003 the hotel was divided into owner-occupied apartments and sold to private individuals. Today the apartments are still owned by private individuals who use the apartments during their holidays and when the apartments are not used by the owners, they are rented out through agencies chosen by the owners. Just as many Danes have watched and enjoyed the series 'Badehotellet' on TV2, which takes place in the period 1928-1947, the owners' association has seen through the 64 episodes that the title *'Dueodde Badehotel'* could create wrong expectations for our apartments and therefore the association changed its name in 2023 to the current one: *'Dueodde Strand Ferielejligheder'*





The history of the Dueodde area **The beautiful Dueodde – with its dark past**



From the start of World War II, Germany wanted to establish two large gun emplacements - one on the southern tip of Bornholm and one on the Baltic coast in northern Germany, both with long-range guns so that traffic in the waters between Bornholm and Germany could be controlled and thus limit the freedom of movement of the Russian fleet. The Germans began construction on Dueodde in October 1940. The plan was to establish 4 installations for guns, but they were never finished - they only managed to build 2-gun emplacements. The construction was shelved when the Germans attacked the Soviet Union on June 22, 1941. The gun emplacements 'G3' and 'G4' still stand here, and both can be found by driving in along Skrokkegårdsvej, from Dueoddevej - they bear witness to a sinister, but exciting, part of Dueodde's history.

Dueodde also had strategic importance during the Cold War. You may have seen the large white tower when you turned off the road towards Dueodde - the tower functioned until 2012 as NATO's forward listening and radar surveillance station towards the Eastern countries. In fact, NATO has had a listening post at Dueodde since the 1950s. When the Russians invaded Hungary in 1956, the listening post at Dueodde had already known about the plans for several days. The listening post had intercepted messages between the Russian military units that were marching towards Hungary. You can see many of those stories documented at the Cold War Museum up by the tower.

Dueodde Strand Ferielejligheder

The radar and listening post were of course of great strategic importance at the time, when there were no satellites for surveillance. There are therefore many stories about "tourists" who in the 1970s and 1980s had a strikingly great interest in photographing the "wildlife" around the Dueodde listening post. Rumor has it that Russian special forces practiced landings on Dueodde Beach, to be trained to quickly disable the radar post in the event of war. Among other things, diving masks and military maps from the Russian special forces were allegedly found on the beach, but at the time Denmark did nothing, for fear of irritating its large neighbor to the east.

Fotograferings-Forbud.

I H. t. Justitsm. Bekendtg. af 25. Maj 1943, jfr. Paragraf 12, er udendørs Fotografering paa Bornholm og Christiansø og paa den udenfor Omraadet liggende Del af Havet inden for en Afstand af 3 Sømil fra Kysten forbudt.

Dueodde also offered drama in the "very old days". The shallow water at Dueodde meant many shipwrecks. Of course, it didn't help that robbers occasionally made fake "lighthouse bonfires" on the beach to lure ships on the wrong course. A good wreck could bring in a lot of income. Of course, this wasn't sustainable, which is why real lighthouses were established. The lighthouses were expanded and renewed along the way, to what we know today as Dueodde Lighthouse. Try climbing the lighthouse's 198 steps, it gives you the opportunity to enjoy an excellent view. It's hard to imagine that this beautiful natural area was once the scene of dramatic shipwrecks and shipwreck robberies.

